

Graphs

Econ 101

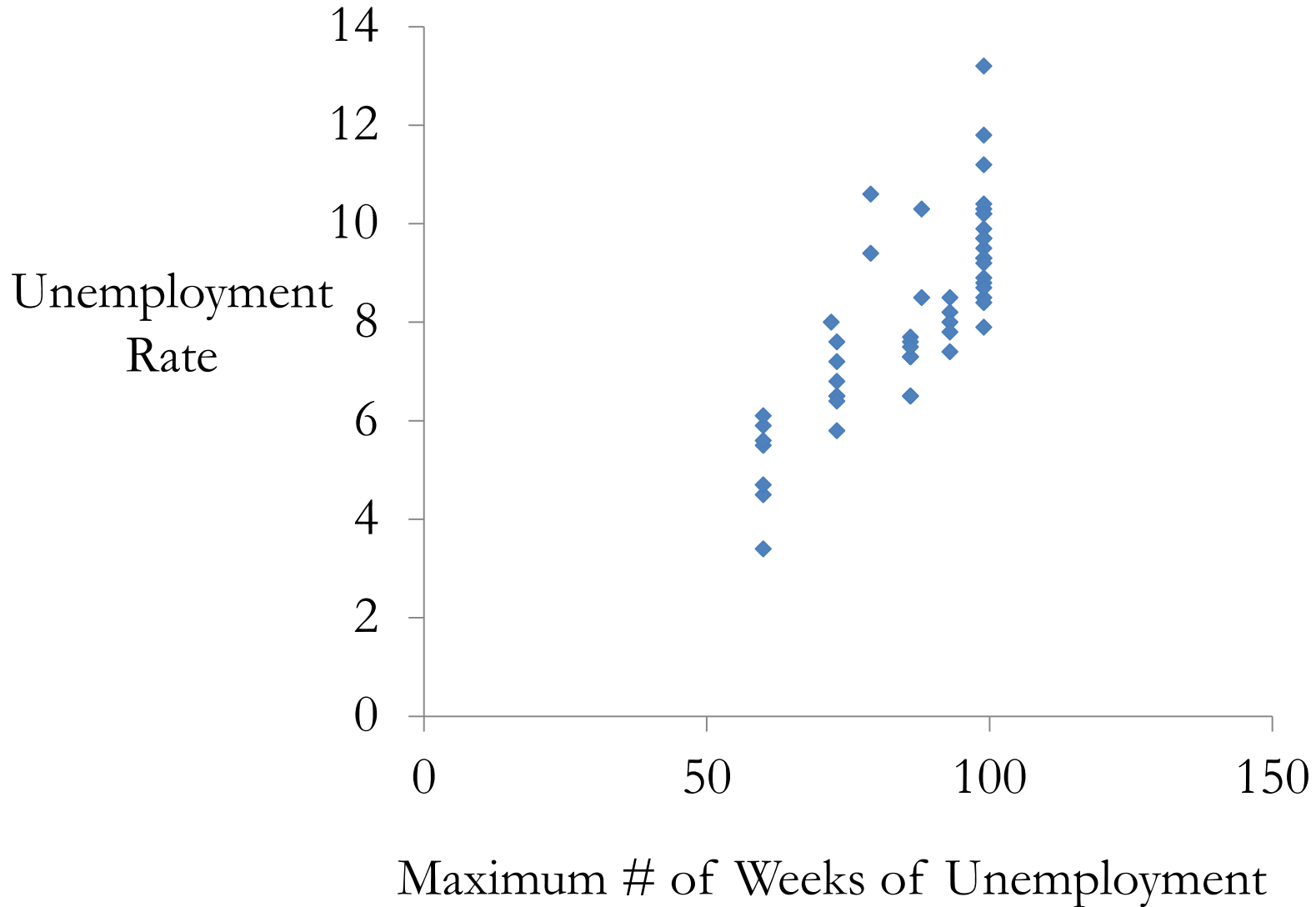
Raw Data

	Maximum Available UI	2011 Unemployment Rate		Maximum Available UI	2011 Unemployment Rate
Alabama	99	8.5	Missouri	88	8.5
Alaska	73	7.6	Montana	73	6.5
Arizona	79	9.4	Nebraska	60	4.5
Arkansas	72	8	Nevada	99	13.2
California	99	11.8	New Hampshire	60	5.5
Colorado	93	8.5	New Jersey	99	9.3
Connecticut	99	8.9	New Mexico	86	7.6
Delaware	93	7.4	New York	93	8.2
District of Columbia	99	10.2	North Carolina	99	10.2
Florida	99	10.3	North Dakota	60	3.4
Georgia	99	9.9	Ohio	99	8.7
Hawaii	73	6.5	Oklahoma	60	5.9
Idaho	99	8.4	Oregon	99	9.7
Illinois	99	9.7	Pennsylvania	93	8
Indiana	99	8.8	Rhode Island	99	11.2
Iowa	73	5.8	South Carolina	88	10.3
Kansas	86	6.5	South Dakota	60	4.7
Kentucky	99	9.5	tennessee	99	9.3
Louisiana	73	7.2	Texas	99	7.9
Maine	86	7.7	Utah	73	6.8
Maryland	86	7.3	Vermont	60	5.6
Massachusetts	86	7.3	Virginia	73	6.4
Michigan	99	10.4	Washington	99	9.2
Minnesota	86	6.5	West Virginia	93	7.8
Mississippi	79	10.6	Wisconsin	86	7.5
			Wyoming	60	6.1

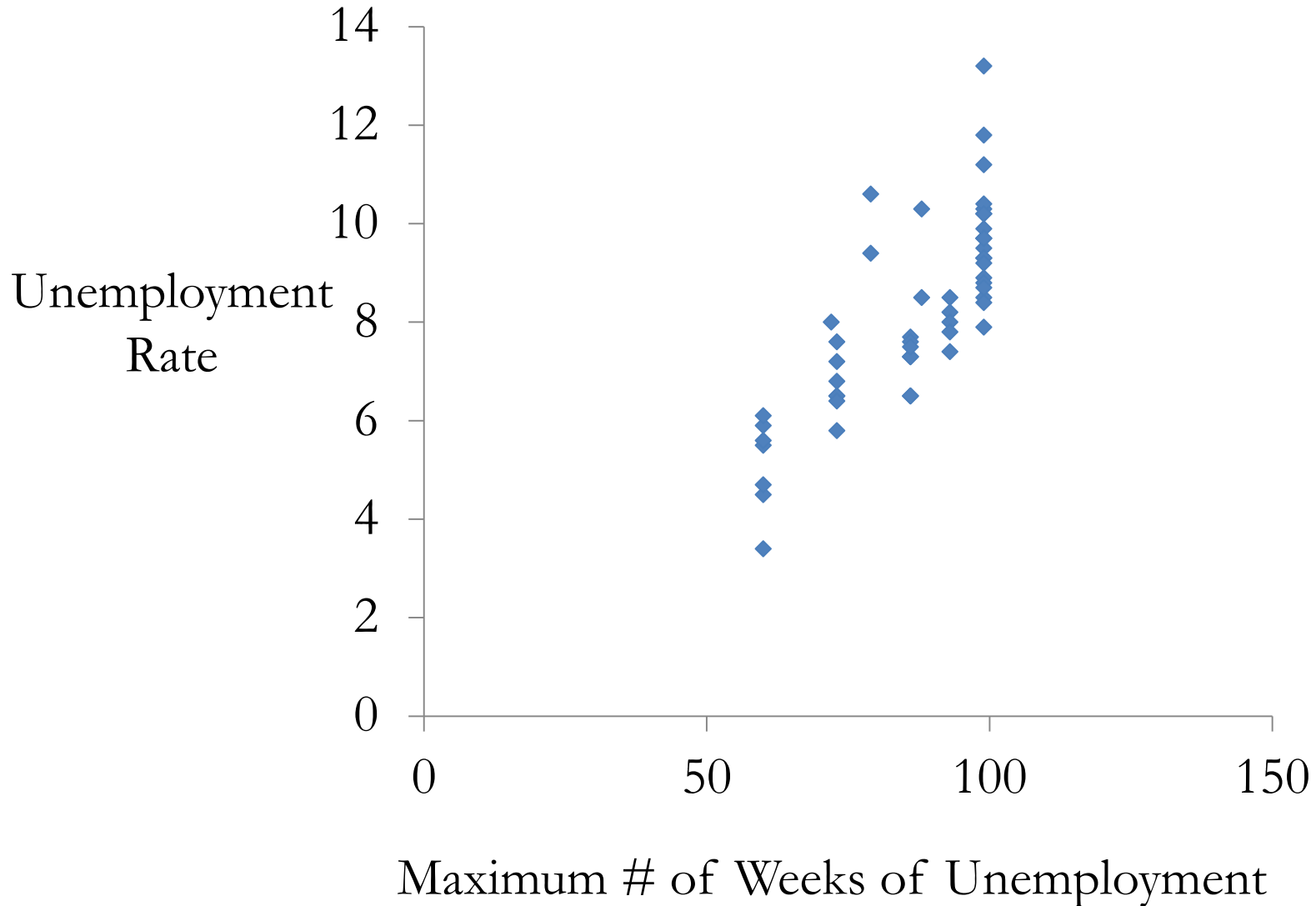
Raw Data

	Maximum Available UI	2011 Unemployment Rate		Maximum Available UI	2011 Unemployment Rate
Alabama	99	8.5	Missouri	88	8.5
Alaska	73	7.6	Montana	73	6.5
Arizona	79	9.4	Nebraska	60	4.5
Arkansas	72	8	Nevada	99	13.2
California	99	11.8	New Hampshire	60	5.5
Colorado	93	8.5	New Jersey	99	9.3
Connecticut	99	8.9	New Mexico	86	7.6
Delaware	93	7.4	New York	93	8.2
District of Columbia	99	10.2	North Carolina	99	10.2
Florida	99	10.3	North Dakota	60	3.4
Georgia	99	9.9	Ohio	99	8.7
Idaho	73	6.5	Oklahoma	60	5.9
Iowa		73			5.8
Illinois	99	9.7	Pennsylvania	99	9.7
Indiana	99	8.8	Rhode Island	99	11.2
Iowa	73	5.8	South Carolina	88	10.3
Kansas	86	6.5	South Dakota	60	4.7
Kentucky	99	9.5	Tennessee	99	9.3
Louisiana	73	7.2	Texas	99	7.9
Maine	86	7.7	Utah	73	6.8
Maryland	86	7.3	Vermont	60	5.6
Massachusetts	86	7.3	Virginia	73	6.4
Michigan	99	10.4	Washington	99	9.2
Minnesota	86	6.5	West Virginia	93	7.8
Mississippi	79	10.6	Wisconsin	86	7.5
			Wyoming	60	6.1

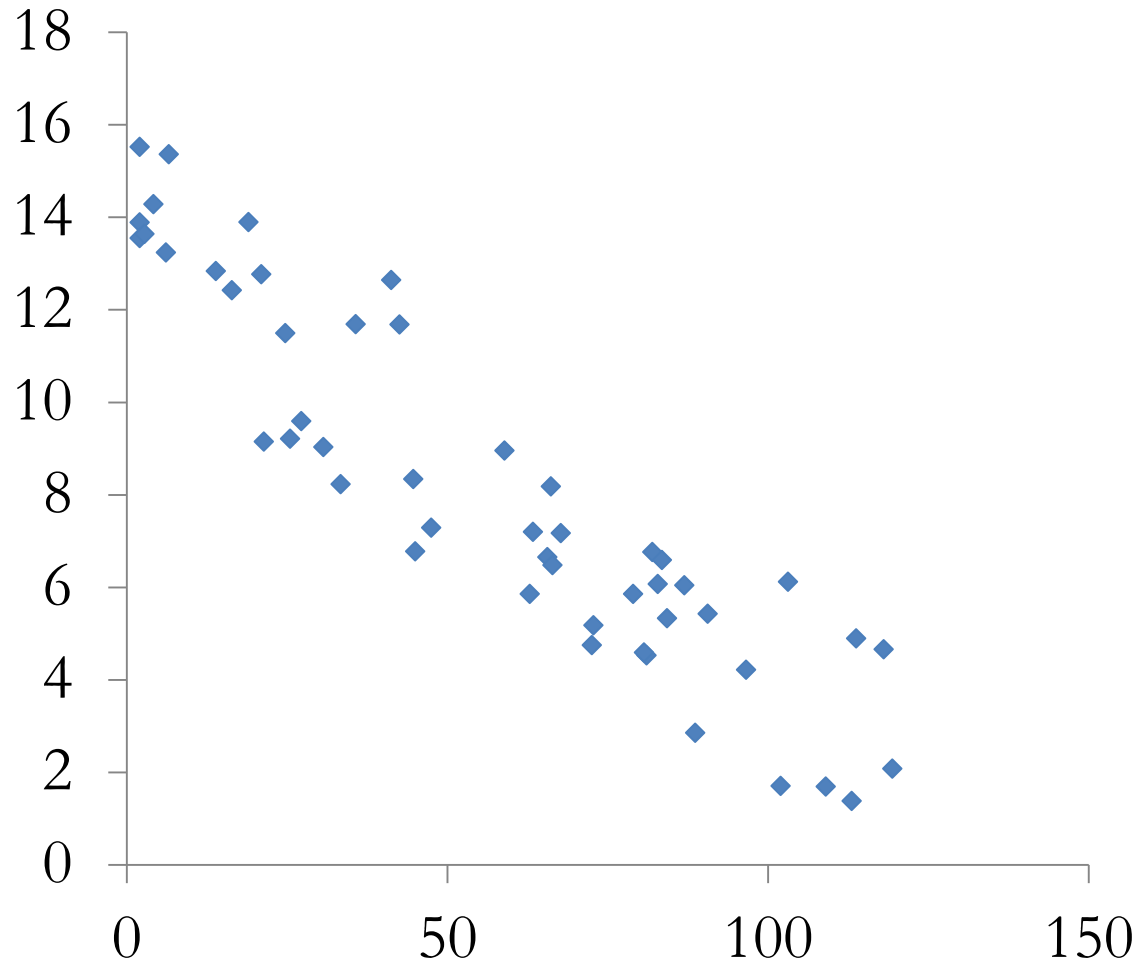
Scatterplot



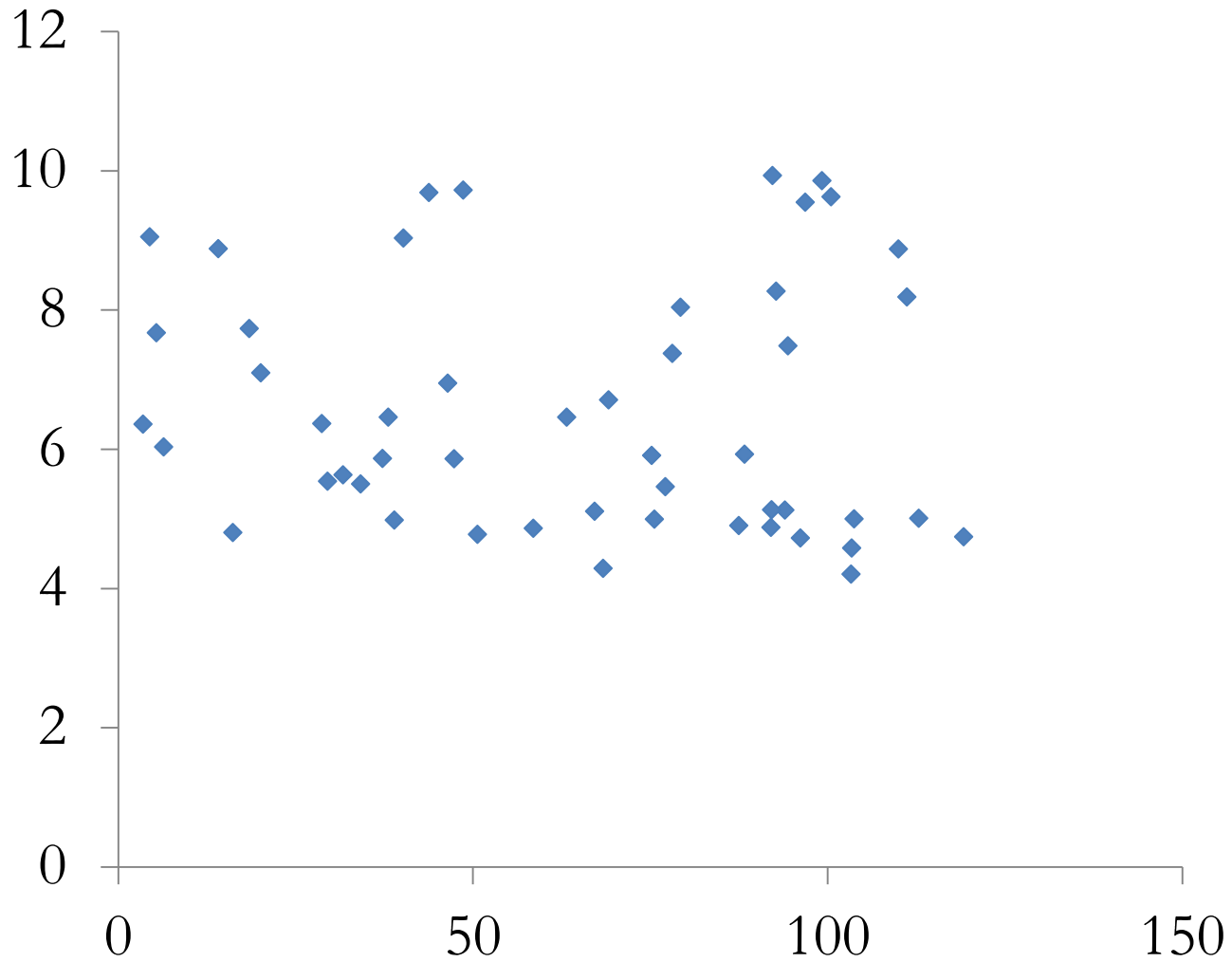
Positive Correlation



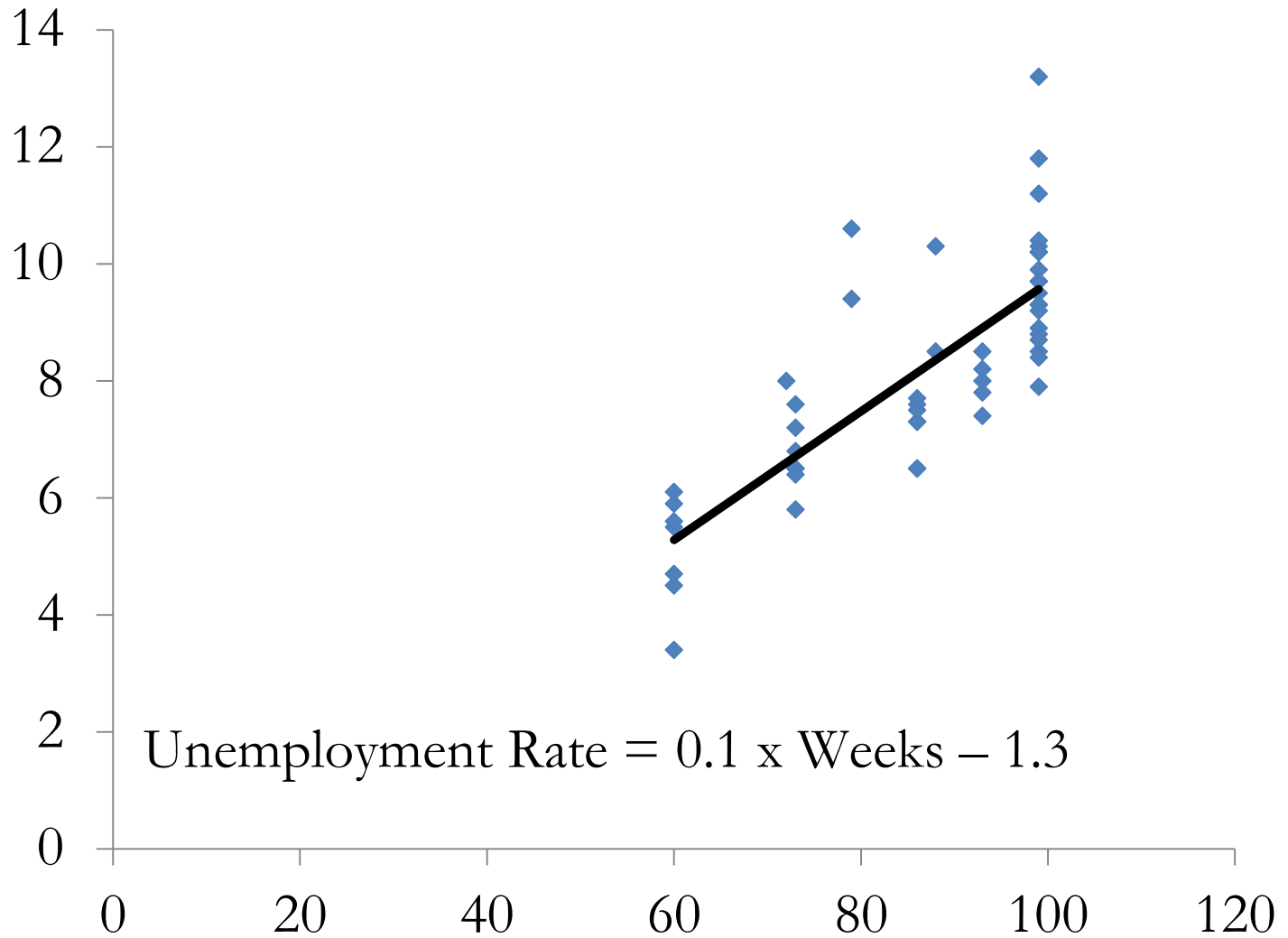
Negative Correlation



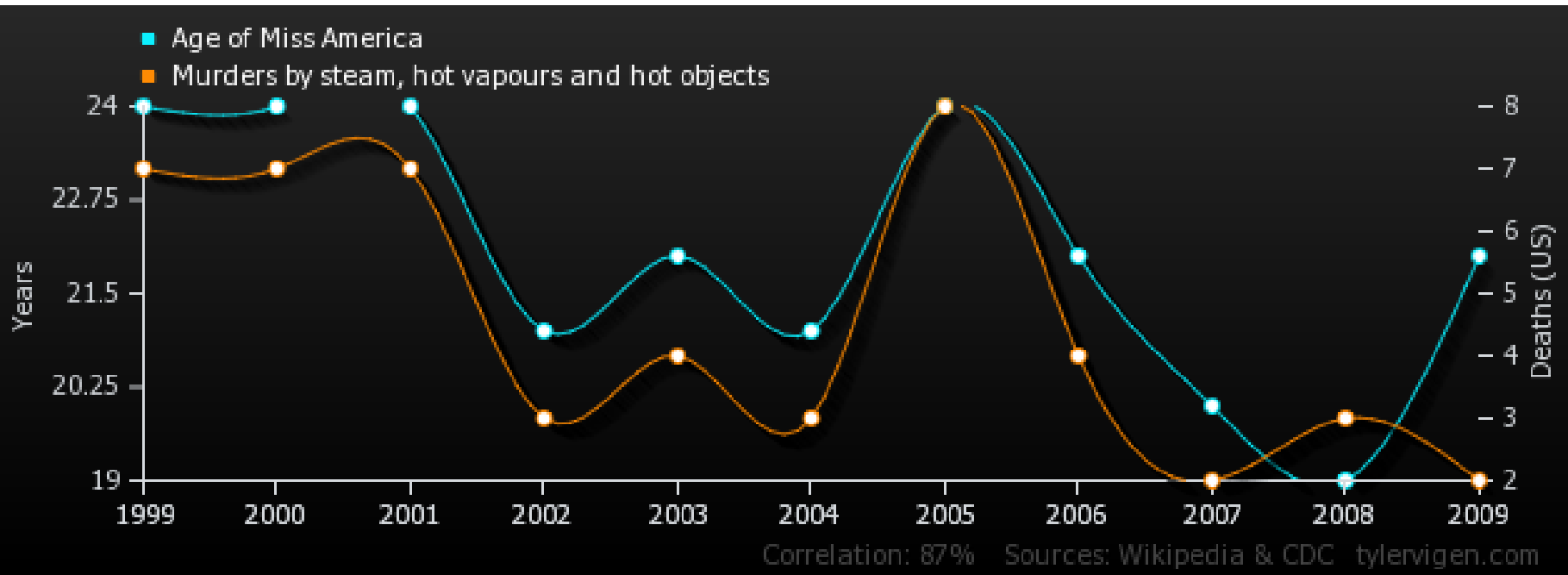
No Correlation



Fitted Line

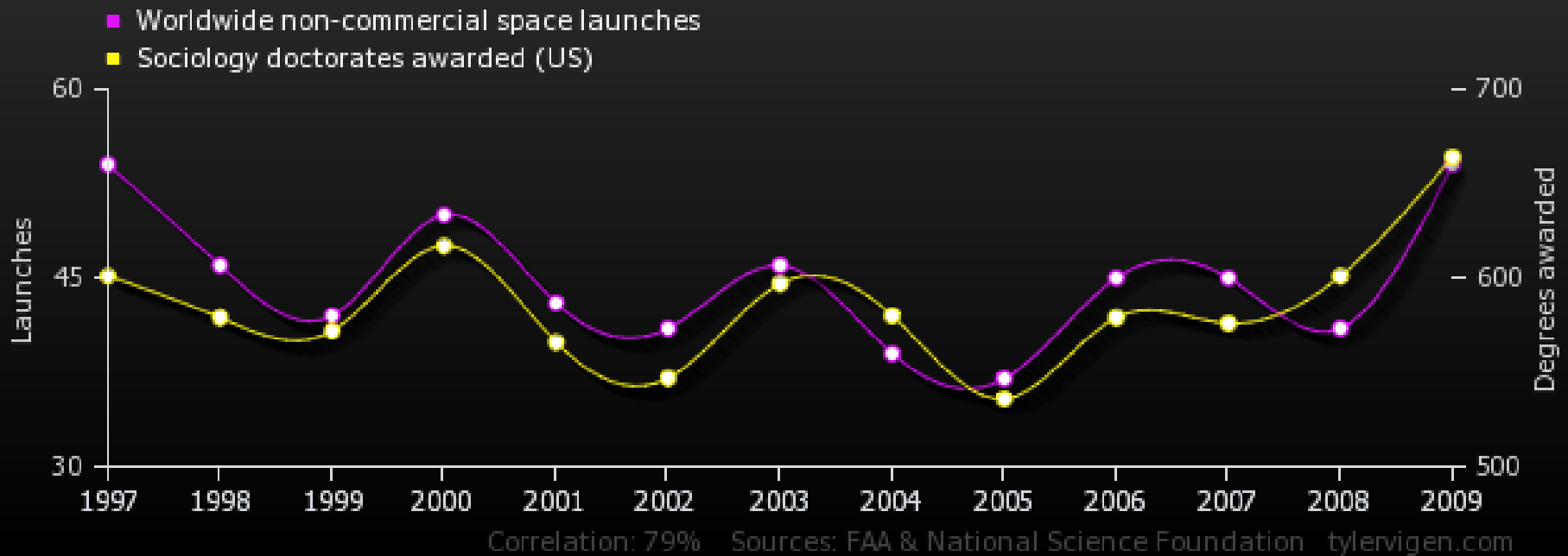


Spurious Correlations



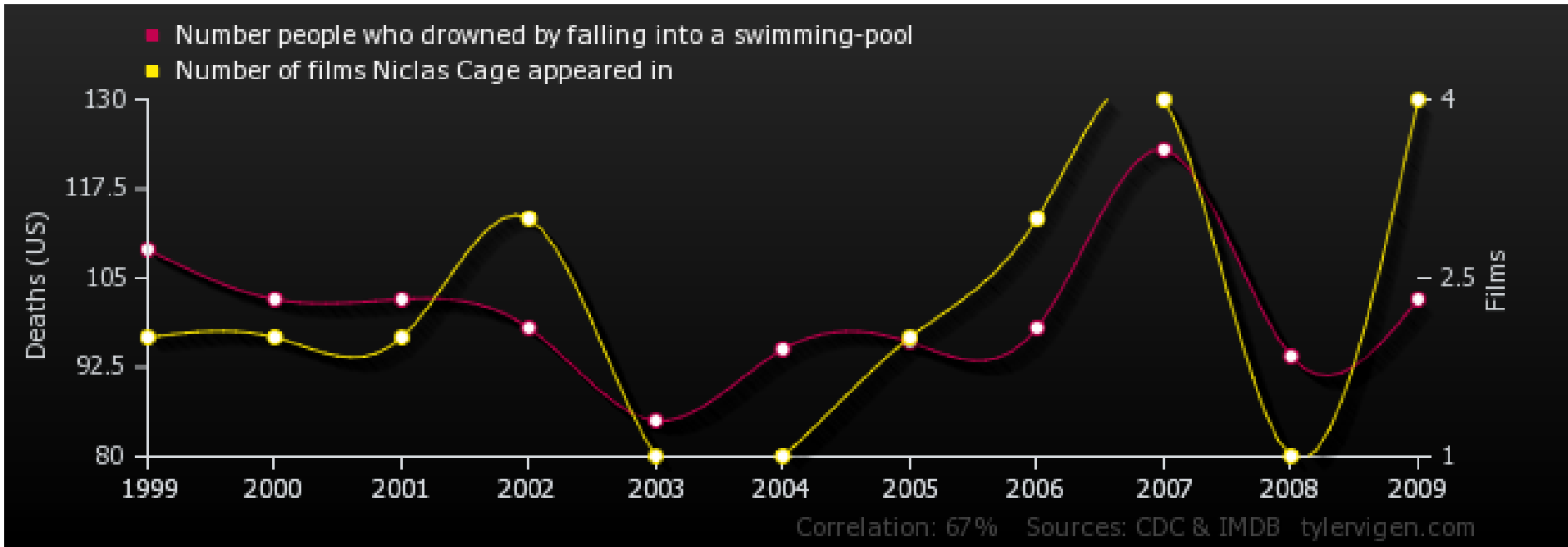
Age of Miss America vs
Murders by Steam, Hot Vapors, and Hot Objects

Spurious Correlations



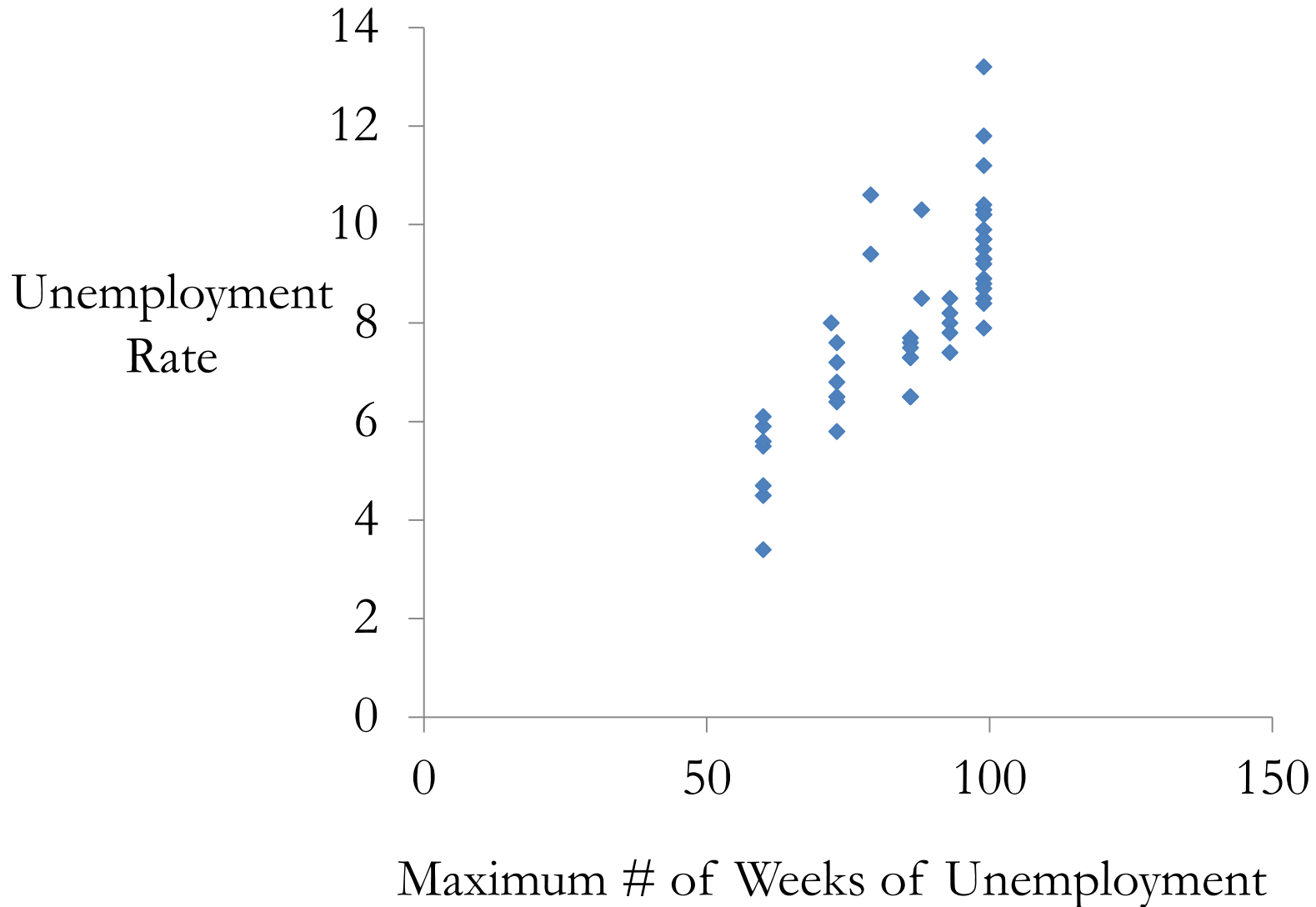
Worldwide Non-Commercial Space Launches vs
Sociology Doctorates Awarded

Spurious Correlations



Number of People who Drowned by Falling into a Swimming Pool vs. Number of Films Nicolas Cage Appeared In

Omitted Variables



Reverse Causality

